

**SPLIT-FLOW POWERPACKS**


- ✓ Simultaneous lifting system to power 4 or 8 single or double acting cylinders.
- ✓ Simultaneous lifting with less than 4% flow difference between outlets.
- ✓ Manual directional control valves (HFM versions) or remote pendant controlled solenoid valves (HFE versions).
- ✓ Suitable for most of the applications where a uniform lifting is required.
- ✓ HFE solenoid valve powerpacks are supplied with a remote pendant with 5 metre cable.
- ✓ Remote pendant allows independent control of the lifting or lowering.
- ✓ Options: roll bars, oil cooler, wheel kit and remote control, to motor control (HFM).

**SPLIT-FLOW**

## Accessories



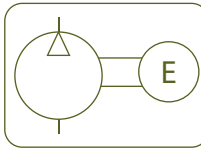
P.96



Performance under Pressure



HFE



SPLIT-FLOW POWERPACKS



Type **HFM HFE**

Capacity **100 - 150 litres**

Max. pressure **700 bar**

**AZ5255**  
Single Way Flow Regulating Valve



P.123

**AZ3**  
Coupler 3/8" - 18 NPT



P.114

**AZ8 - AZ9**  
Directional control valves



P.122

Remote Pendant in HFE

- ✓ Allows the individual or simultaneous movement of each cylinder when lifting or lowering.
- ✓ Advance/retract switch selects the position of the solenoid valves.
- ✓ Individual buttons for each cylinder to operate them independently or at the same time.
- ✓ Simultaneous button moves all the jacks at the same time.
- ✓ To improve the control over lowering of the cylinders it is highly recommended to use AZ5255 lowering valves.
- ✓ To make the retraction of single acting spring return cylinders easier, once the lifting is completed and the cylinders are not under load a switch in the electric box allows automatic retraction of the cylinder.



HFM (MANUAL VALVE) / HFE (SOLENOID VALVE)

380-415V / 50-60 Hz / 3 phase							
Outlets	Tank	Flow at 700 bar	Manual Valve HFM		Solenoid Valve HFE		Power
No.	l	l/min	Single/A	Double/A	Single/A	Double/A	kW
4	100	0,4	HFM46724	HFM46744	HFE46764	HFE46774	3,0
		0,9	HFM47724	HFM47744	HFE47764	HFE47774	5,5
		2,0	HFM49724	HFM49744	HFE49764	HFE49774	11,0
	150	0,4	HFM46824	HFM46844	HFE46864	HFE46874	3,0
		0,9	HFM47824	HFM47844	HFE47864	HFE47874	5,5
		2,0	HFM49824	HFM49844	HFE49864	HFE49874	11,0
8	150	1,3	HFM88824	HFM88844	HFE88864	HFE88874	15,0



Available 230V - 3 phase as special

**ACCESSORIES FOR POWERPACKS****B Remote Pendant**

- ✓ With 3 metre long cable.
- ✓ For the remote operation of the motor in HBM series, 'ON' button starts the motor and it stops when the button is released.
- ✓ HBE series are supplied with the remote pendant as standard, with up, down and emergency stop button.
- ✓ Remote pendant is not available for HAG and HAZ.

**H Oil Cooler**

- ✓ It is used when the powerpack is used continuously.
- ✓ Stabilizes oil viscosity.

**C Roll Bar**

- ✓ Protects pump and its components: motor, valves, etc
- ✓ For easy portability.
- ✓ Different sizes available.



**R Wheel Kit**

- ✓ Makes powerpacks easy to move.
- ✓ Two wheels supplied with brake.

**P Pedal**

- ✓ Optional instead of remote pendant.
- ✓ With 3 metre long cable.
- ✓ For the remote operation of the motor in HBM series.
- ✓ For the remote operation of the movements in HBE series.

**D Digital Gauge**

- ✓ Excellent stability and accuracy:
- ✓  $\pm 0,1-0,5$  % Full Scale (FS)
- ✓ For reliable pressure measurement.
- ✓ Digital pressure measurement and back-lit display.
- ✓ Easy operation.
- ✓ Pressure range: 0-1000 bar.